

# SmartBolts®

Visual Indication System™

## Get Peace of Mind when you...

### Know at a Glance your Bolted Joints are Secure™



### TORQUE is **NOT** Always TIGHT

Measuring torque only tells you how difficult it is to turn the bolt. It provides little information about bolt tension, the force that is actually holding your critical joints together.

The SmartBolts built-in visual tension indicator turns from **red** to **black** when proper tension has been reached and is completely reversible for the life of the fastener.

### SmartBolts are on the Job Worldwide...

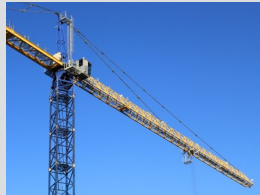
- ✓ Keeping production up and running
- ✓ Saving inspection time and maintenance
- ✓ Helping prevent accidents



**Renewable Energy**  
*Wind turbine*  
Gamesa



**Industrial Automation**  
*Robotic arc welders*  
Caterpillar Work Tools



**Cranes**  
*Slewing bearings*  
Agrico Sales



**Manufacturing**  
*Injection molding*  
US Farathane



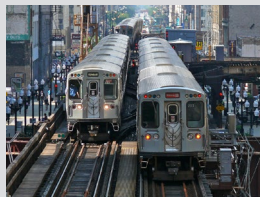
**Mining**  
*Mobile stacking conveyor*  
Barrick Gold



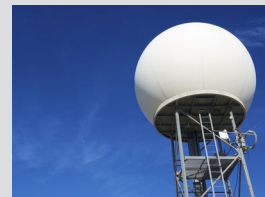
**Oil & Gas**  
*Pump assembly for hydraulic fracturing*  
FMC Technologies



**Heavy Equipment**  
*Excavator drilling equipment*  
Bay Shore Systems



**Rail Equipment**  
*Multiple applications*  
Chicago Transit Authority



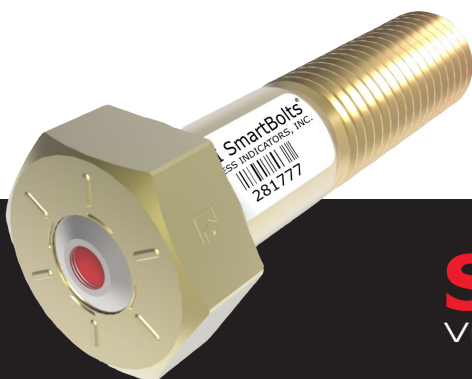
**Structural**  
*NEXRAD Doppler radar*  
National Weather Service



**Transportation**  
*Heavy duty truck suspension assembly*  
Volvo Trucks North America

### Put SmartBolts to Work for You...

Go to [smartbolts.com/shop](http://smartbolts.com/shop) to search our catalog of Pre-Engineered SmartBolts or request Custom SmartBolts manufactured to your specifications.



# SmartBolts®

Visual Indication System™

Stress Indicators Incorporated  
(240) 631-7246  
[sales@smartbolts.com](mailto:sales@smartbolts.com)  
[www.smartbolts.com](http://www.smartbolts.com)